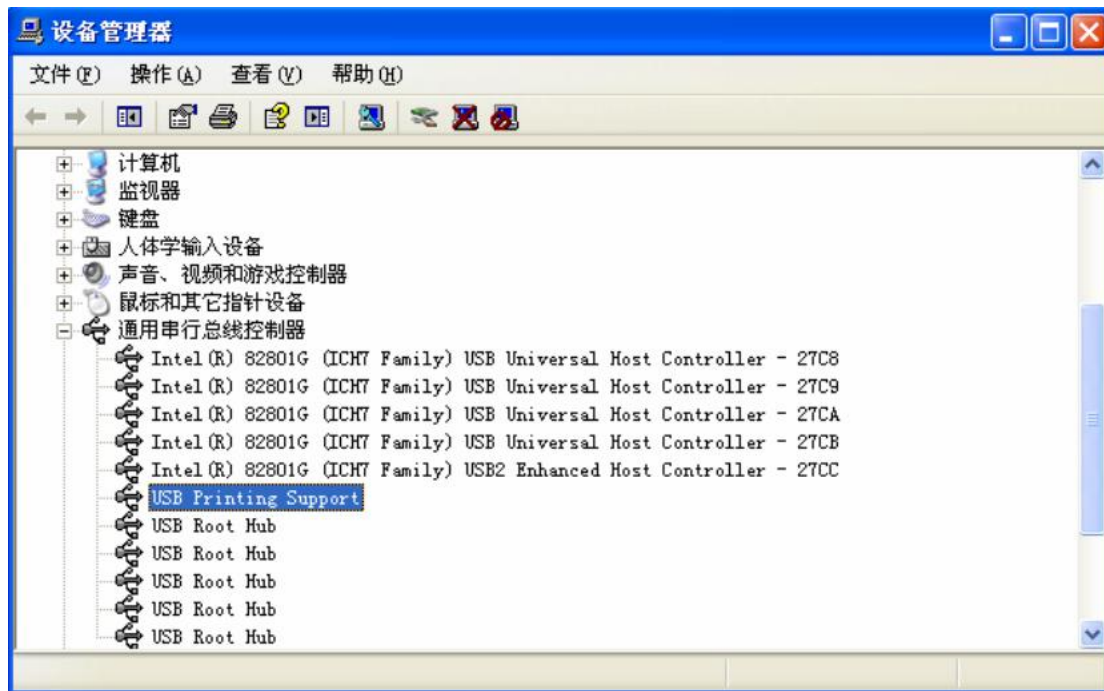
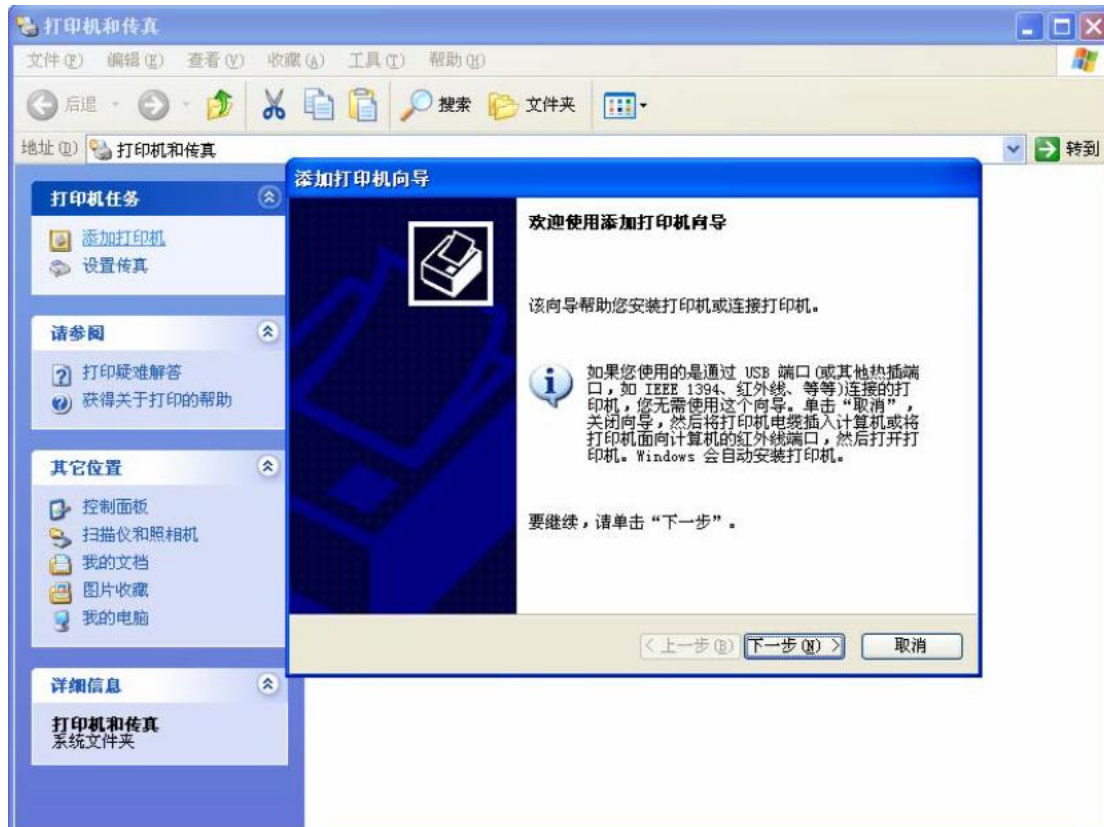


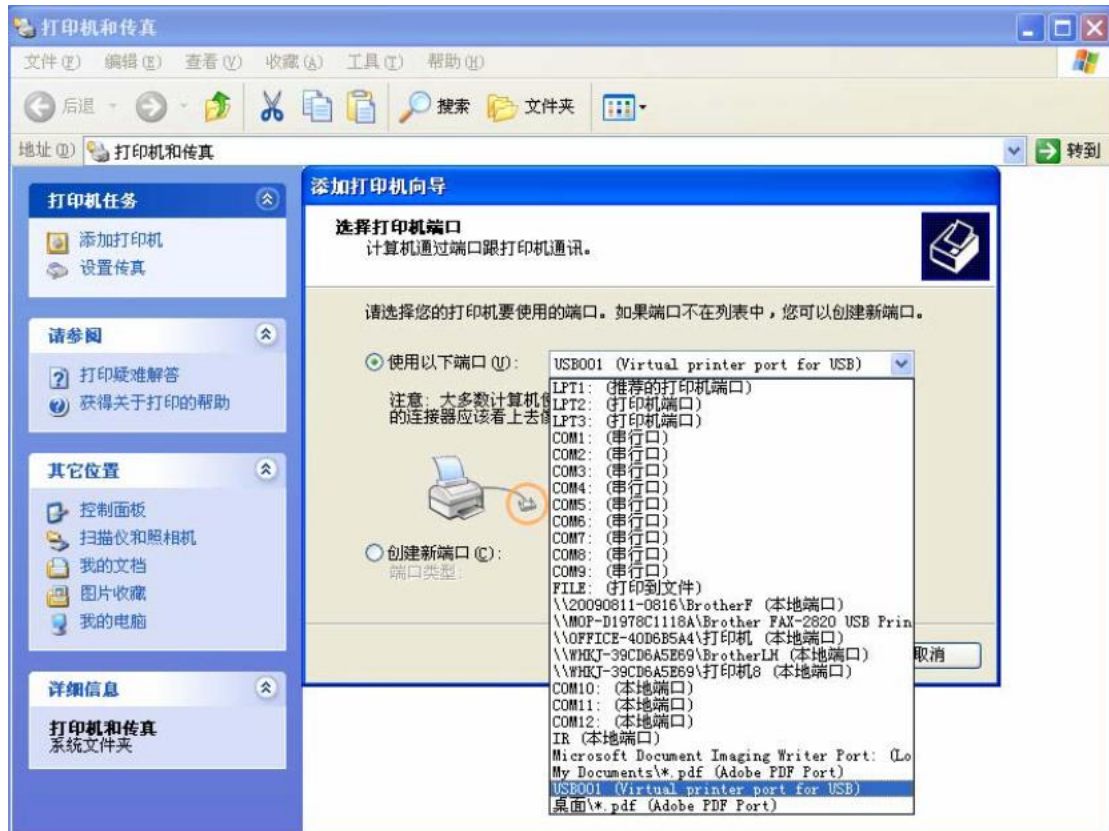
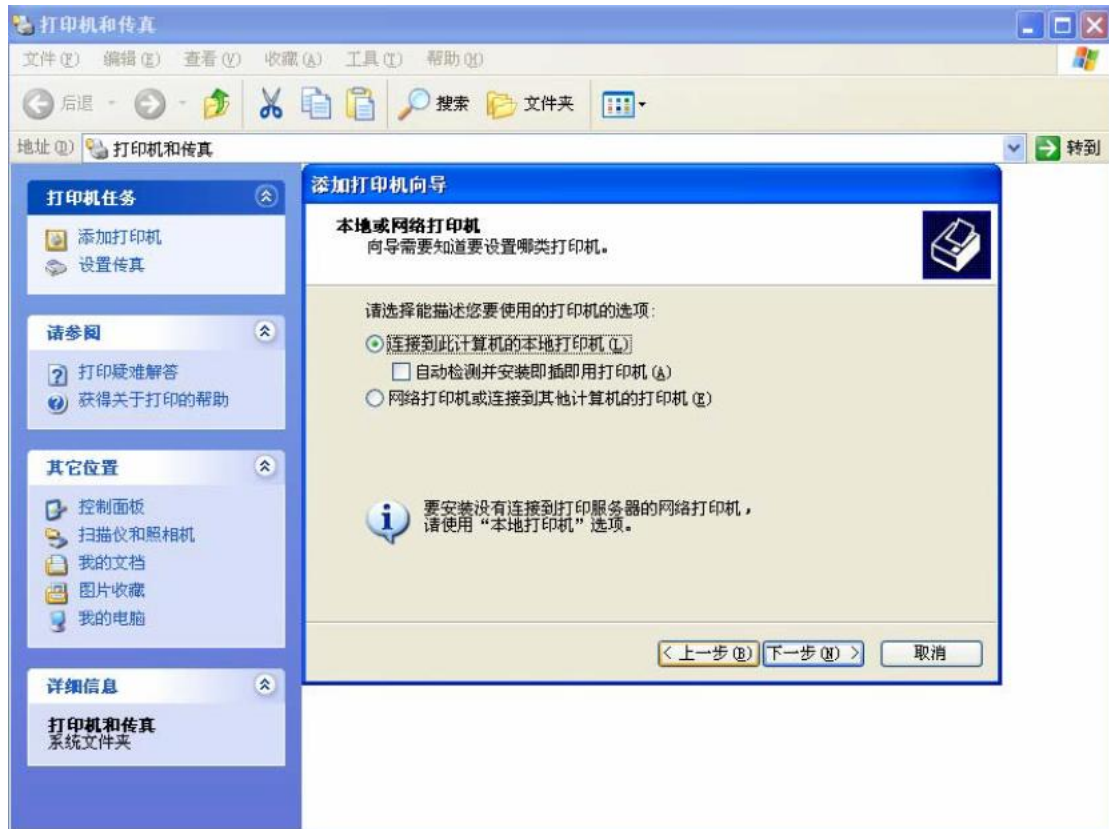
融众易达 USB打印机安装说明

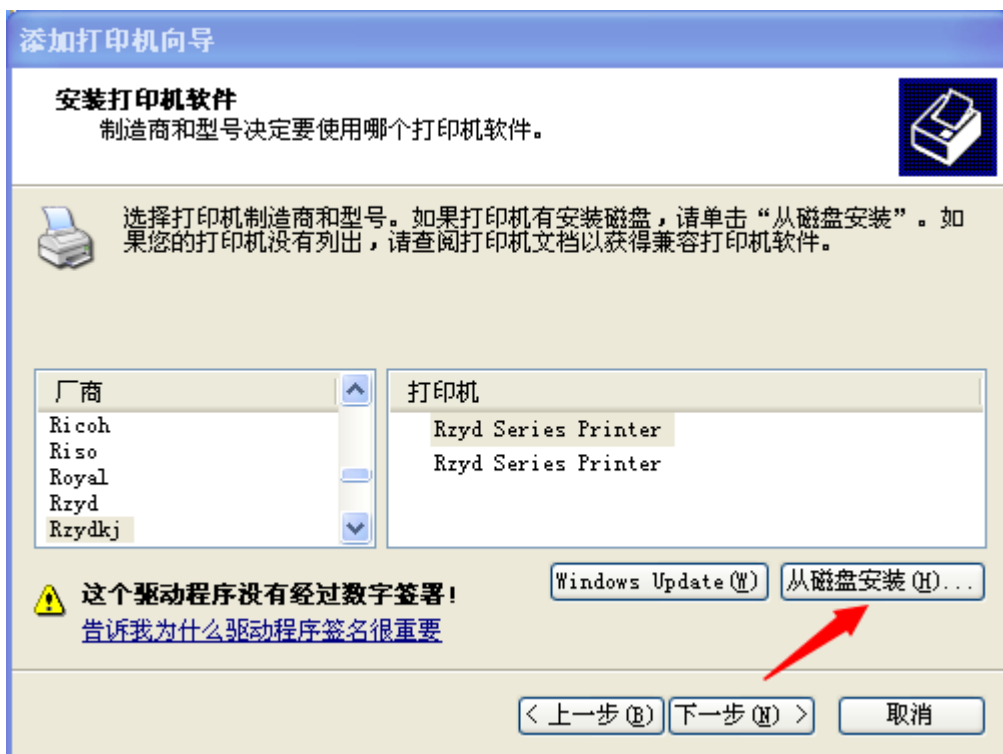
1. USB线与 PC机连接，打开打印机，此时 PC机会提示找到新硬件，并在“通用串行总线控制器”中显示“USB Printing Support”如下图：



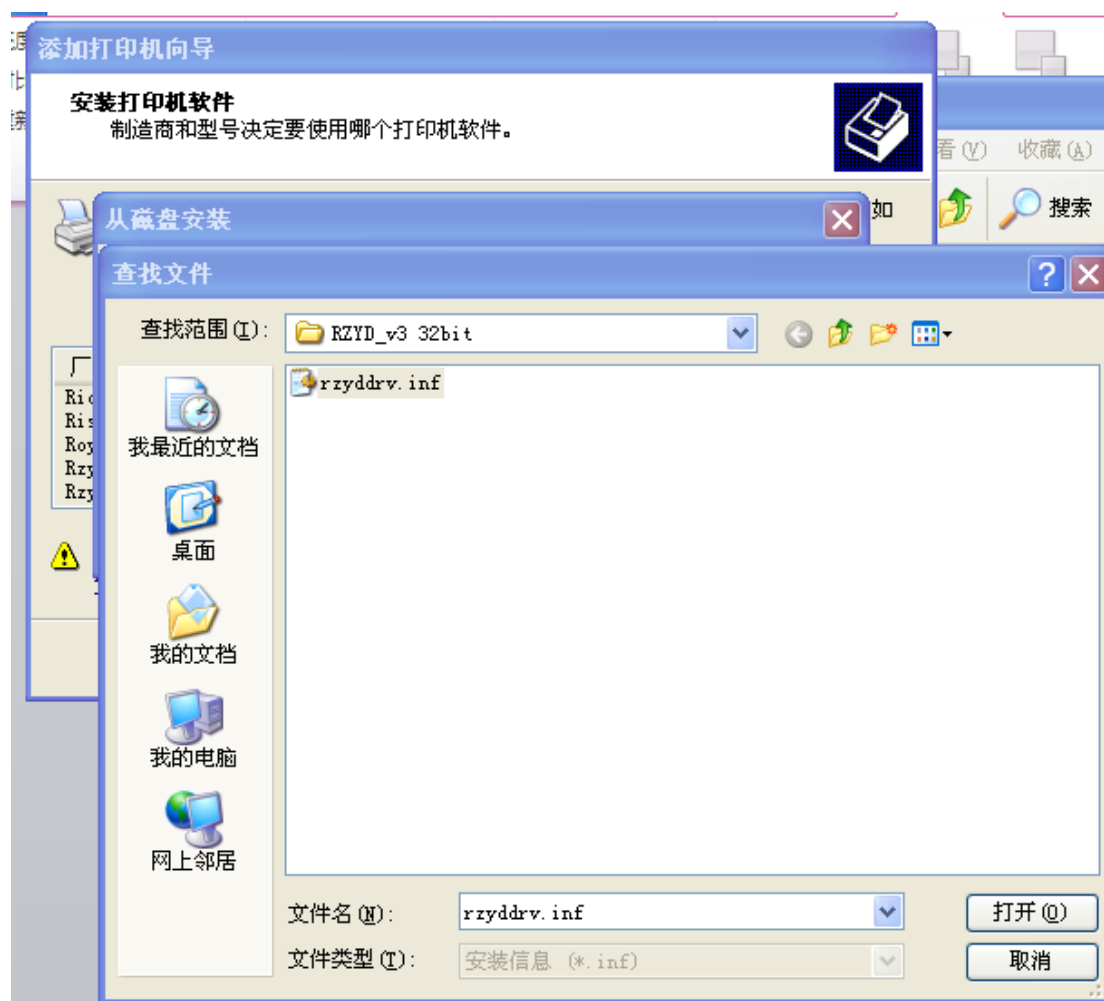
2. 在“打印机和传真”中添加新打印机，如下图：

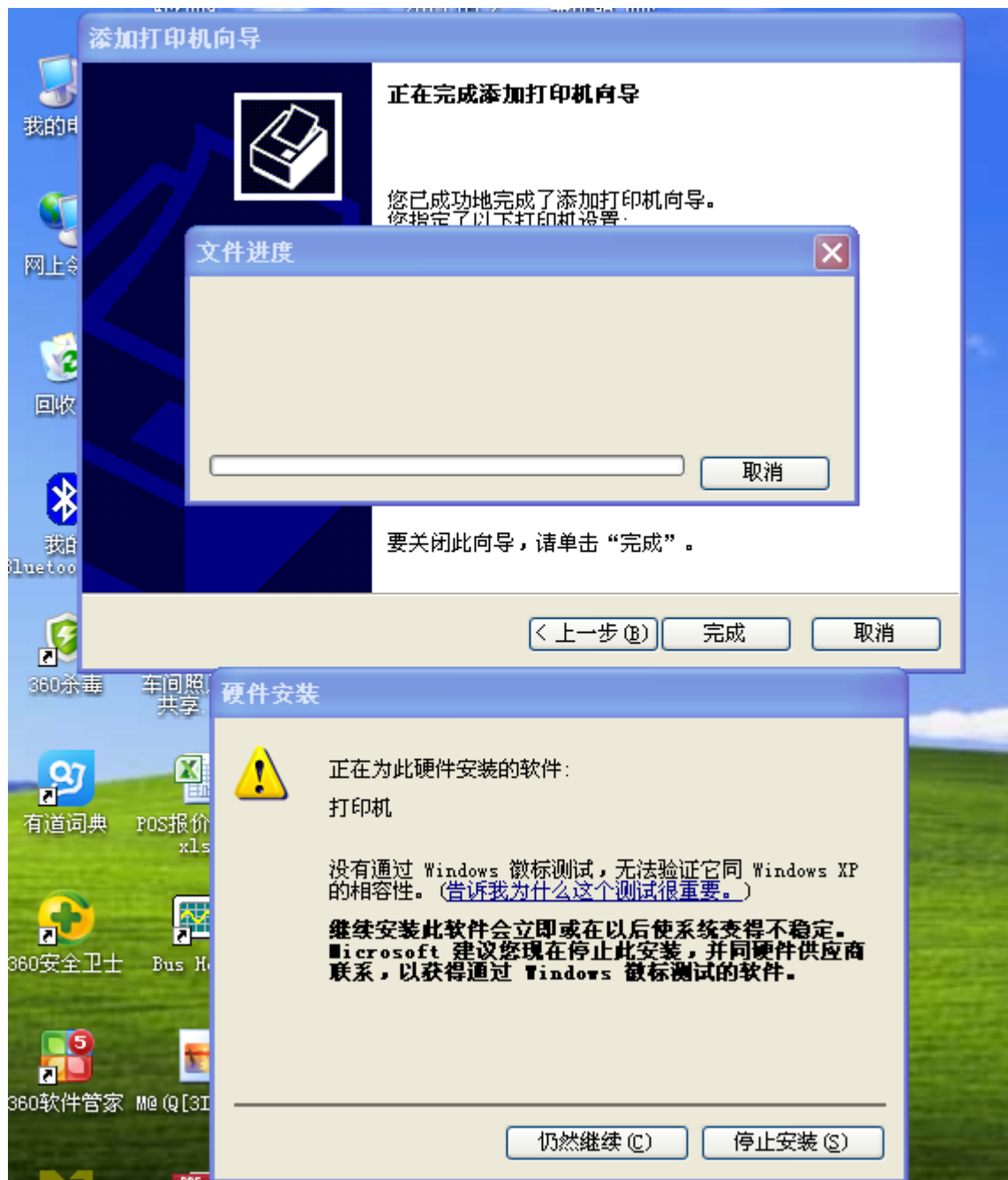






选择“从磁盘安装”，“浏览”查找文件，在打印机驱动程序目录选择“rzyddrv.INF”文件





选择 仍然继续 完成安装